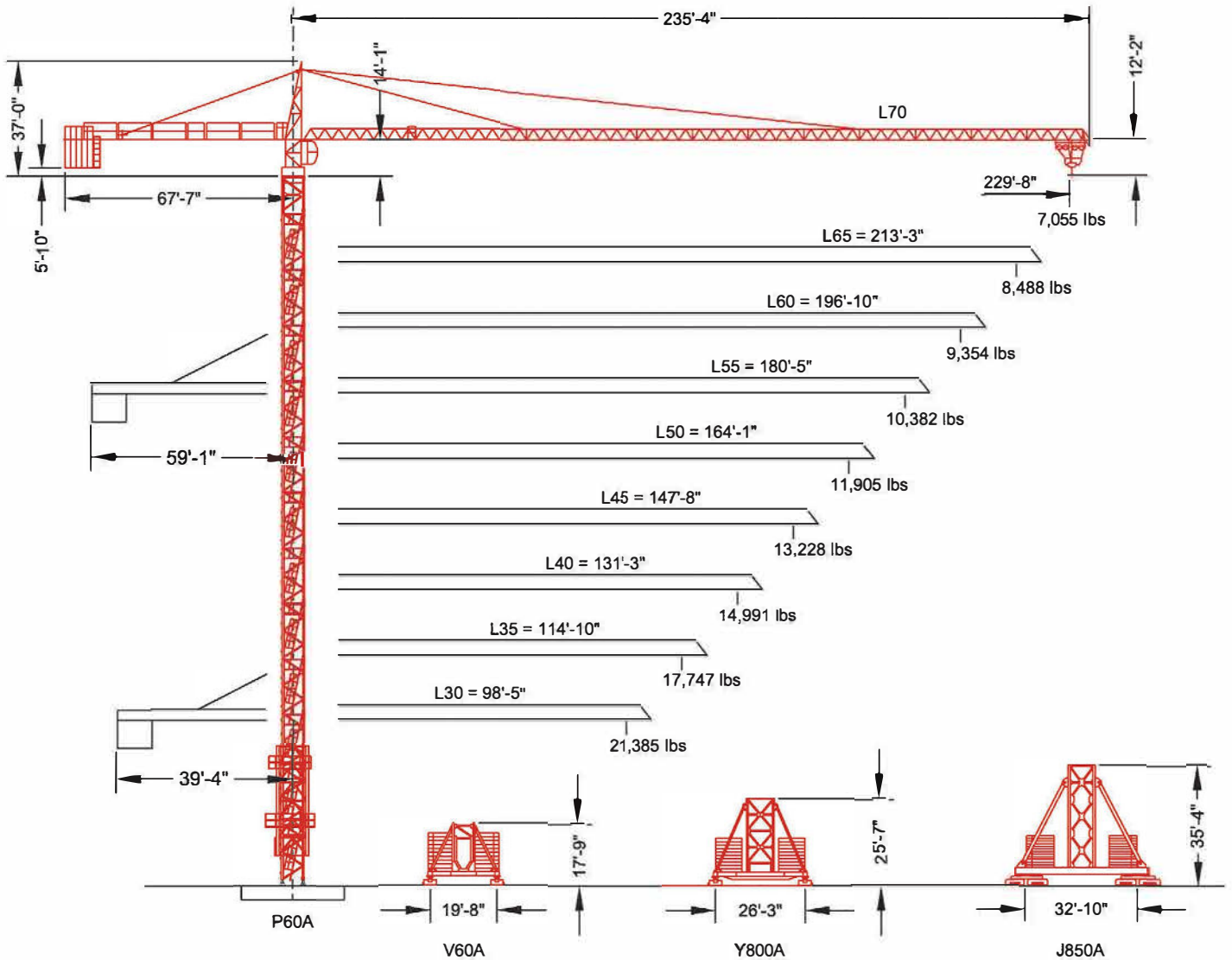


MD 310B-K12

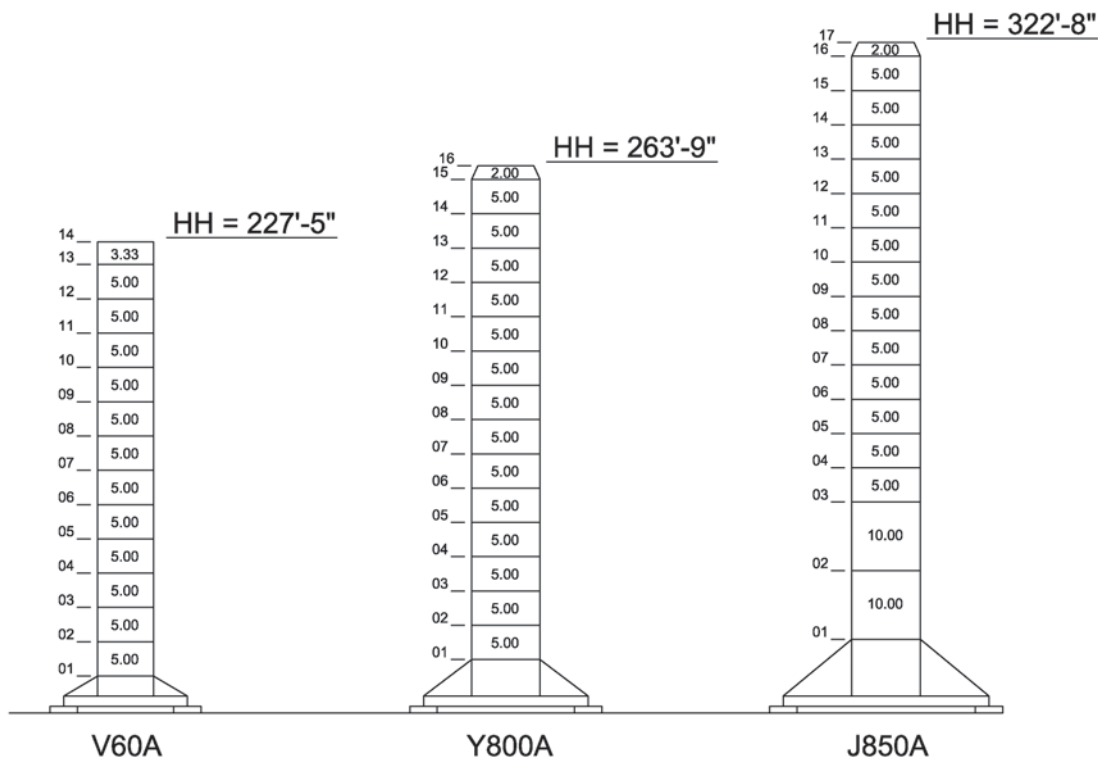
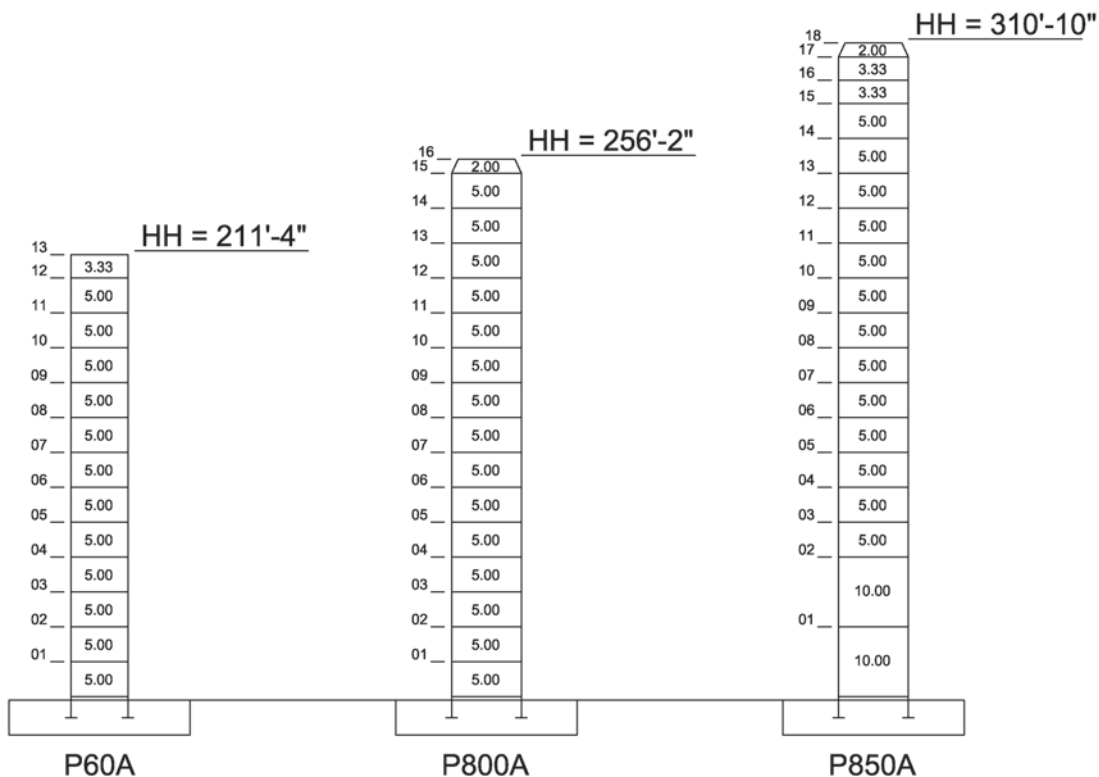
Maximum Capacity = 26,455 lbs



Note: Tip capacities are dependent on certain trolley types.

F.E.M. 1.001

Maximum Free-Standing Hook Heights



Mechanical Data

Function	Hoist Type	Speed vs Weight	2-part (lifting)					4-part (lifting)					Motor (hp)	Motor (kW)	Rope Length (ft)
			1st Gear	2nd Gear	3rd Gear	4th Gear	5th Gear	1st Gear	2nd Gear	3rd Gear	4th Gear	5th Gear			
Hoist	50 LVF 30 Optima	ft/min lbs	99 13,228	125 9,921	178 6,614	256 3,307		50 26,455	63 19,842	89 13,228	128 6,614		50	37	1,115
	75 LVF 30 Optima	ft/min lbs	145 13,228	184 9,921	263 6,614	375 3,307		73 26,455	92 19,842	132 13,228	188 6,614		75	55	1,870
	100 LVF 30 Optima	ft/min lbs	197 13,228	250 9,921	355 6,614	519 3,307		99 26,455	125 19,842	178 13,228	260 6,614		100	75	1,926 or 3,343
	150 LCC 30	ft/min lbs	283 13,228	338 9,921	424 6,614	565 3,307	676 1,653	142 26,455	171 19,842	214 13,228	283 6,614	338 3,307	150	110	2,139
Trolley	6 DVF 4	ft/min	165 (26,455 lbs)					329 (13,228 lbs)		394 (6,614 lbs)			5.5	4.0	
Swing	RVF 162 Optima	rpm	0.70									2 x 7.5	2 x 5.5		

Power Requirements: 480 V (+6% or -10%) 60 Hz measured at turn table.

Amperage: 50 LVF 30: 88 Amp (3 phase service with ground)

Amperage: 75 LVF 30: 118 Amp (3 phase service with ground)

Amperage: 100 LVF 30: 147 Amp (3 phase service with ground)

Amperage: 150 LCC 30: 245 Amp (3 phase service with ground)

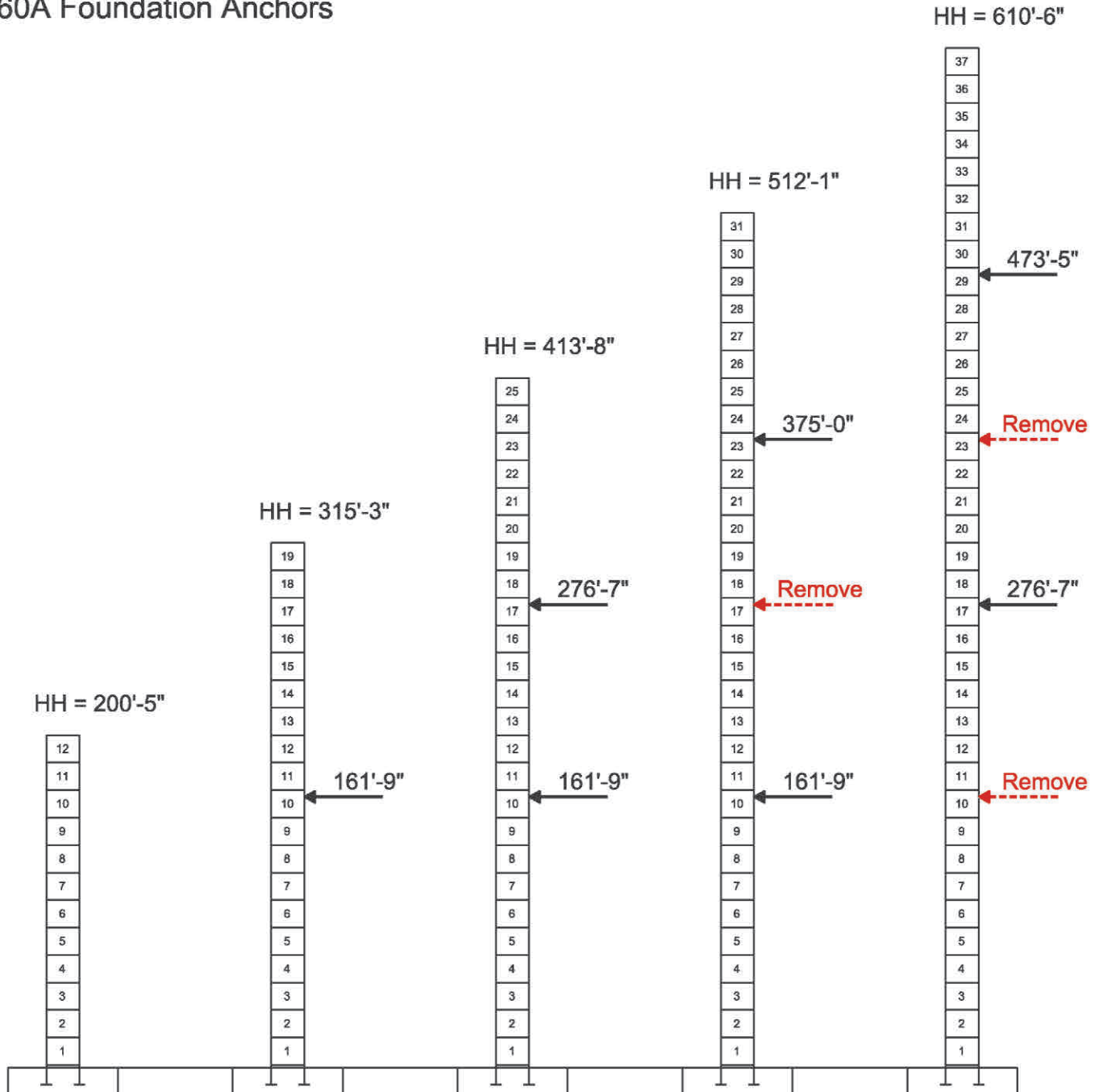
Notes:

1. The 50 LVF 30 is the standard hoist option for the MD 310B-K12. Other hoist options must be at the request of the customer.
2. Hoist speeds with "Optima" hoist units are 25% faster than the speeds listed above when lowering the hook.
3. The 100 LVF 30 hoist drum can be purchased in either a small or large drum size depending on the customers needs.
4. Values given under "Rope Length" are for drum spooling capacity only.

External Climbing

Jib Configurations: L30 thru L70 (98'-5" thru 229'-8")

P60A Foundation Anchors



Rated Load Chart



SM-DM Trolley

Capacity (lbs)

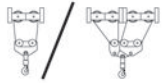
Hook Radius	229'-8"	213'-3"	196'-10"	180'-5"	164'-1"	147'-8"	131'-3"	114'-10"	98'-5"
20'-0"	26,455	26,455	26,455	26,455	26,455	26,455	26,455	26,455	26,455
30'-0"	26,455	26,455	26,455	26,455	26,455	26,455	26,455	26,455	26,455
40'-0"	26,455	26,455	26,455	26,455	26,455	26,455	26,455	26,455	26,455
50'-0"	26,455	26,455	26,455	26,455	26,455	26,455	26,455	26,455	26,455
60'-0"	26,455	26,455	26,455	26,455	26,455	26,455	26,455	26,455	26,455
70'-0"	26,455	26,455	26,455	26,455	26,455	26,455	26,455	26,455	26,455
80'-0"	22,978	24,570	24,824	24,831	25,373	25,985	26,455	26,455	26,455
90'-0"	19,937	21,372	21,622	21,628	22,108	22,650	23,563	23,690	23,779
98'-5"	17,866	19,195	19,442	19,448	19,886	20,380	21,213	21,329	21,385
100'-0"	17,519	18,830	19,076	19,082	19,513	20,000	20,819	20,933	
110'-0"	15,551	16,760	17,004	17,009	17,400	17,842	18,585	18,688	
114'-10"	14,726	15,893	16,136	16,140	16,515	16,937	17,648	17,747	
120'-0"	13,917	15,043	15,285	15,289	15,647	16,051	16,731		
130'-0"	12,944	13,594	13,835	13,839	14,169	14,541	15,167		
131'-3"	12,789	13,431	13,672	13,676	14,002	14,371	14,991		
140'-0"	11,767	12,762	13,000	13,001	13,228	13,250			
147'-8"	10,977	11,931	12,168	12,170	12,463	12,787			
150'-0"	10,749	11,692	11,929	11,930	12,218				
160'-0"	9,861	10,757	10,993	10,995	11,265				
164'-1"	9,533	10,413	10,648	10,649	10,913				
170'-0"	9,079	9,935	10,170	10,171					
180'-0"	8,384	9,205	9,439	9,440					
180'-5"	8,355	9,174	9,408	9,409					
190'-0"	7,764	8,553	8,786						
196'-10"	7,376	8,145	8,378						
200'-0"	7,207	7,966							
210'-0"	6,703	7,437							
213'-3"	6,550	7,275							
220'-0"	6,246								
229'-8"	5,842								

Max. Load Radius									
From	8'-6"	8'-6"	8'-6"	8'-6"	8'-6"	8'-6"	8'-6"	8'-6"	8'-6"
To	71'-1"	75'-1"	75'-9"	75'-9"	77'-2"	78'-9"	81'-6"	81'-10"	82'-2"

Notes:

1. The above load chart was calculated using the SM-DM trolley system.
2. Values above the red line can be achieved with 4-part line configuration only.
3. Deduct 551 lbs from values below the red line when using 4-part line configuration instead of 2-part.

Rated Load Chart



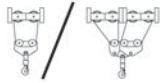
1C-2C Trolley

2-Part Capacity (lbs)

Hook Radius	229'-8"	213'-3"	196'-10"	180'-5"	164'-1"	147'-8"	131'-3"	114'-10"	98'-5"
20'-0"	13,228	13,228	13,228	13,228	13,228	13,228	13,228	13,228	13,228
30'-0"	13,228	13,228	13,228	13,228	13,228	13,228	13,228	13,228	13,228
40'-0"	13,228	13,228	13,228	13,228	13,228	13,228	13,228	13,228	13,228
50'-0"	13,228	13,228	13,228	13,228	13,228	13,228	13,228	13,228	13,228
60'-0"	13,228	13,228	13,228	13,228	13,228	13,228	13,228	13,228	13,228
70'-0"	13,228	13,228	13,228	13,228	13,228	13,228	13,228	13,228	13,228
80'-0"	13,228	13,228	13,228	13,228	13,228	13,228	13,228	13,228	13,228
90'-0"	13,228	13,228	13,228	13,228	13,228	13,228	13,228	13,228	13,228
98'-5"	13,228	13,228	13,228	13,228	13,228	13,228	13,228	13,228	13,228
100'-0"	13,228	13,228	13,228	13,228	13,228	13,228	13,228	13,228	
110'-0"	13,228	13,228	13,228	13,228	13,228	13,228	13,228	13,228	
114'-10"	13,228	13,228	13,228	13,228	13,228	13,228	13,228	13,228	
120'-0"	13,228	13,228	13,228	13,228	13,228	13,228	13,228		
130'-0"	13,228	13,228	13,228	13,228	13,228	13,228	13,228		
131'-3"	13,228	13,228	13,228	13,228	13,228	13,228	13,228		
140'-0"	12,961	13,228	13,228	13,228	13,228	13,228			
147'-8"	12,173	13,131	13,130	13,131	13,228	13,228			
150'-0"	11,946	12,892	12,891	12,892	13,208				
160'-0"	11,061	11,960	11,960	11,961	12,256				
164'-1"	10,734	11,616	11,616	11,617	11,905				
170'-0"	10,281	11,140	11,139	11,140					
180'-0"	9,589	10,412	10,411	10,412					
180'-5"	9,560	10,381	10,381	10,382					
190'-0"	8,971	9,762	9,761						
196'-10"	8,584	9,355	9,354						
200'-0"	8,415	9,177							
210'-0"	7,913	8,649							
213'-3"	7,760	8,488							
220'-0"	7,457								
229'-8"	7,055								

Max. Load Radius									
From	10'-2"	10'-2"	10'-2"	10'-2"	10'-2"	10'-2"	10'-2"	10'-2"	10'-2"
To	137'-7"	146'-8"	146'-8"	146'-8"	149'-10"	147'-8"	131'-3"	114'-10"	98'-5"

Rated Load Chart



1C-2C Trolley

4-Part Capacity (lbs)

Hook Radius	229'-8"	213'-3"	196'-10"	180'-5"	164'-1"	147'-8"	131'-3"	114'-10"	98'-5"
20'-0"	26,455	26,455	26,455	26,455	26,455	26,455	26,455	26,455	26,455
30'-0"	26,455	26,455	26,455	26,455	26,455	26,455	26,455	26,455	26,455
40'-0"	26,455	26,455	26,455	26,455	26,455	26,455	26,455	26,455	26,455
50'-0"	26,455	26,455	26,455	26,455	26,455	26,455	26,455	26,455	26,455
60'-0"	26,455	26,455	26,455	26,455	26,455	26,455	26,455	26,455	26,455
70'-0"	26,455	26,455	26,455	26,455	26,455	26,455	26,455	26,455	26,455
80'-0"	22,669	24,485	24,485	24,485	25,084	25,700	26,455	26,455	26,455
90'-0"	19,637	21,295	21,295	21,295	21,826	22,372	23,347	23,472	23,559
98'-5"	17,573	19,124	19,124	19,124	19,609	20,106	20,996	21,110	21,164
100'-0"	17,226	18,760	18,760	18,760	19,236	19,726	20,601	20,714	
110'-0"	15,264	16,696	16,696	16,696	17,128	17,572	18,366	18,468	
114'-10"	14,441	15,831	15,831	15,831	16,244	16,669	17,429	17,527	
120'-0"	13,635	14,983	14,983	14,983	15,379	15,785	16,511		
130'-0"	12,262	13,539	13,539	13,539	13,903	14,278	14,947		
131'-3"	12,108	13,376	13,376	13,376	13,737	14,108	14,771		
140'-0"	11,089	12,305	12,305	12,305	12,643	12,990			
147'-8"	10,301	11,476	11,476	11,476	11,797	12,125			
150'-0"	10,074	11,238	11,238	11,238	11,553				
160'-0"	9,189	10,306	10,306	10,306	10,601				
164'-1"	8,862	9,962	9,962	9,962	10,250				
170'-0"	8,409	9,486	9,486	9,486					
180'-0"	7,717	8,758	8,758	8,758					
180'-5"	7,688	8,727	8,727	8,727					
190'-0"	7,098	8,108	8,108						
196'-10"	6,711	7,701	7,701						
200'-0"	6,543	7,523							
210'-0"	6,040	6,995							
213'-3"	5,887	6,834							
220'-0"	5,584								
229'-8"	5,182								

Max. Load Radius									
From	10'-2"	10'-2"	10'-2"	10'-2"	10'-2"	10'-2"	10'-2"	10'-2"	10'-2"
To	70'-4"	74'-11"	74'-11"	74'-11"	76'-5"	78'-0"	80'-11"	81'-3"	81'-7"

MD 310B-K12





Constant improvement and engineering progress make it necessary that we reserve the right to make specification, equipment, and price changes without notice. Illustrations shown may include optional equipment and accessories, and may not include all standard equipment. Product brochures are for illustration purposes only. Contact the manufacturer or consult the operation manual for specific details concerning this product.

Manitowoc Crane Group - Americas

Shady Grove, Pennsylvania Facility
1565 Buchanan Trail East
Shady Grove, PA 17256-0021, USA
Tel: [Int + 001] 717 597 8121
Fax: [Int + 001] 717 597 4062

MD 310B-K12

