

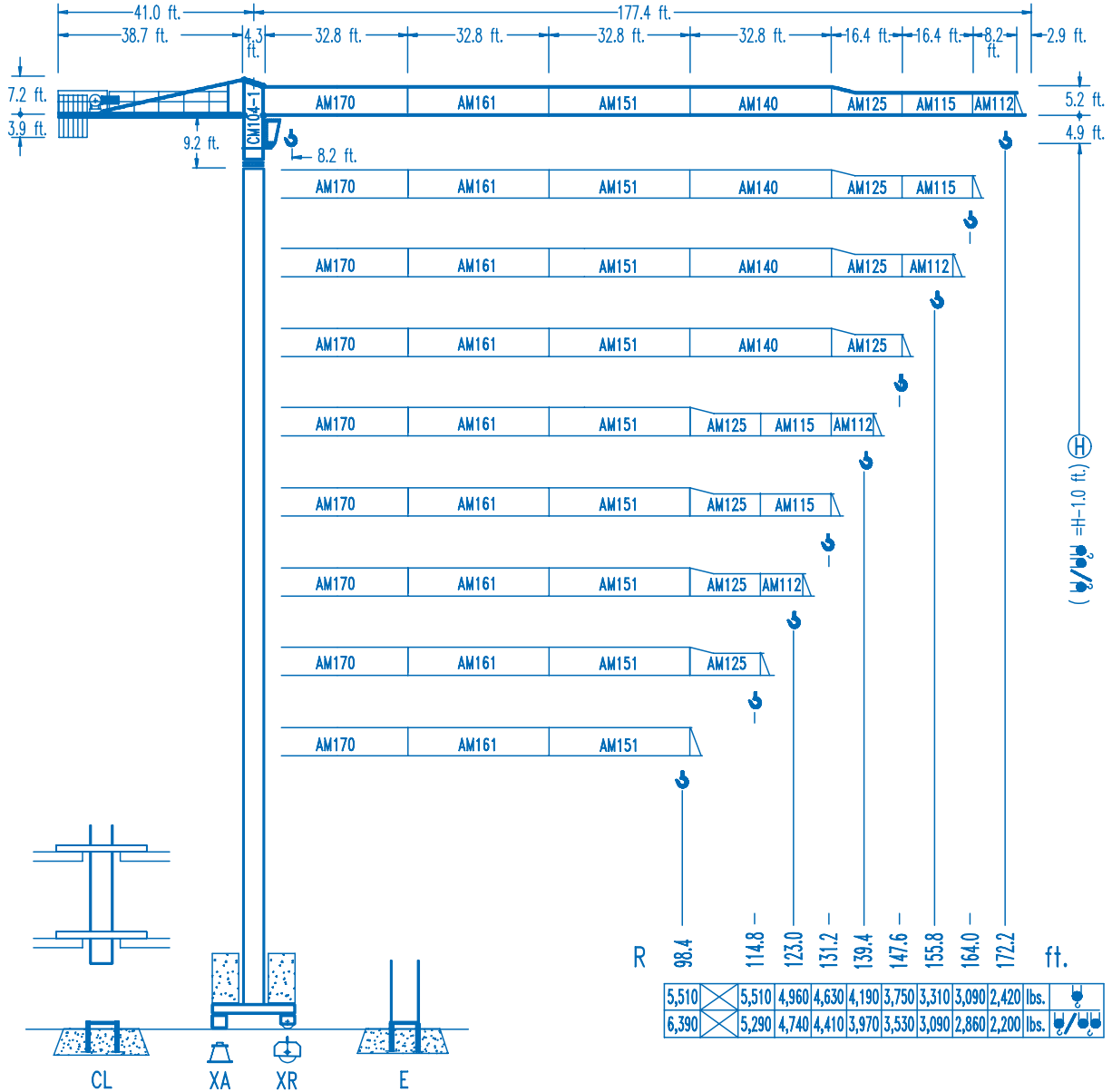


COMANSA

MAXIM
1-877-MAX-LIFT

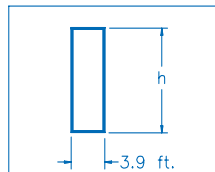
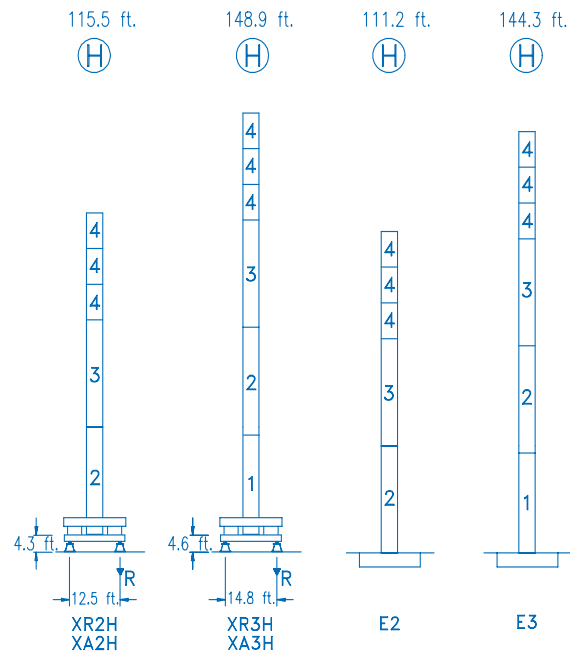
LC-5211

11,020 lbs.



CE
DIN 15018 H1 B3

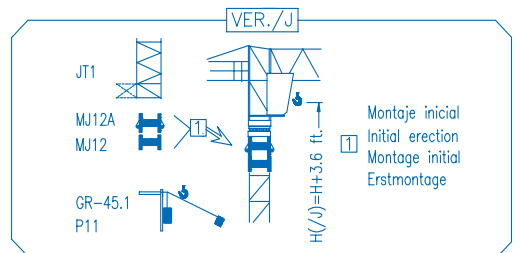
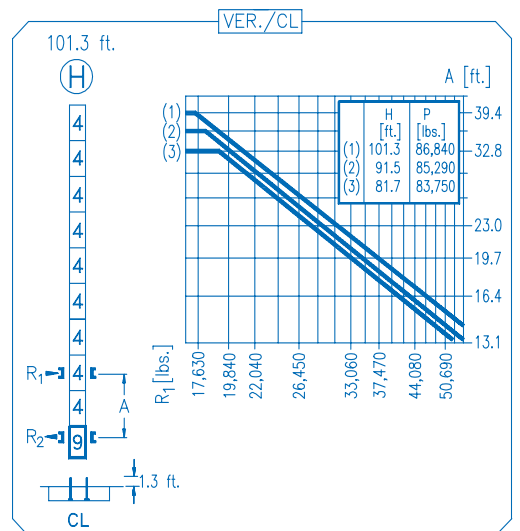
R	R(Cmax)	Cmax	65.6	82.0	98.4	114.8	123.0	131.2	139.4	147.6	155.8	164.0	172.2	ft.
172.2	87.9 ft.	5,510	5,510	5,510	4,830	4,010	3,700	3,420	3,170	2,950	2,750	2,580	2,420	
	46.6 ft.	11,020	7,450	5,730	4,580	3,790	3,480	3,200	2,950	2,730	2,530	2,360	2,200	
164.0	101.0 ft.	5,510	5,510	5,510	5,510	4,740	4,360	4,060	3,770	3,500	3,280	3,090		
	53.5 ft.	11,020	8,730	6,740	5,540	4,520	4,140	3,830	3,550	3,280	3,060	2,860		
155.8	101.4 ft.	5,510	5,510	5,510	5,510	4,760	4,390	4,080	3,790	3,530	3,310			
	53.5 ft.	11,020	8,770	6,790	5,470	4,540	4,170	3,860	3,570	3,310	3,090			
147.6	106.3 ft.	5,510	5,510	5,510	5,510	5,050	4,650	4,320	4,010	3,750				
	56.1 ft.	11,020	9,260	7,160	5,800	4,830	4,430	4,100	3,790	3,530				
139.4	110.2 ft.	5,510	5,510	5,510	5,510	5,240	4,850	4,500	4,190					
	58.4 ft.	11,020	9,650	7,470	6,040	5,020	4,630	4,280	3,970					
131.2	112.8 ft.	5,510	5,510	5,510	5,510	5,400	4,980	4,630						
	59.7 ft.	11,020	9,920	7,690	6,210	5,180	4,760	4,410						
123.0	112.2 ft.	5,510	5,510	5,510	5,510	5,380	4,960							
	59.4 ft.	11,020	9,850	7,650	6,170	5,160	4,740							
114.8	114.8 ft.	5,510	5,510	5,510	5,510	5,510								
	60.7 ft.	11,020	10,090	7,850	6,350	5,290								
98.4	98.4 ft.	5,510	5,510	5,510	5,510									
	61.0 ft.	11,020	10,160	7,890	6,390									



N	Ref.	h
1	MT123	33.1 ft.
2	MH124A	38.7 ft.
3	MH124	38.7 ft.
4	MH121	9.8 ft.
9	CL20	7.2 ft.

MH124=(4)MH121-0.6 ft.

- H=H+0.6 ft.
- H=H
- H=H
- H=H-0.6 ft.



R. máx.	En servicio In operation En service In Betrieb	XR2H 96,650 lbs.
		XR3H 144,620 lbs.

R. máx.	Fuera de servicio Out of service Hors service Ausser Betrieb	XR2H 89,730 lbs.
		XR3H 101,630 lbs.

CS2-1.9

3 hp.

66 ft./min
189 ft./min

CFU-2.2

3 hp.

0 262 ft./min

GR-9.0

66 ft.lbs.

0 0,8 rpm

TS2-4.5	TS2-5.5
2x33 ft.lbs.	2x40 ft.lbs.
0 78 ft./min	
XR2H	XR3H

ES3-18-12

29 hp.

	I	II	III
ft./min	32	126	252
lbs.	5,510	5,510	2,860
ft./min	16	63	126
lbs.	11,020	11,020	5,730

EFU2-18-12

24 hp.

Tensión de alimentación Operating voltage Tension de service Betriebsspannung	480 V 3 ph 60 Hz
----------------------------------------------------------------------------------------	---------------------------------------------

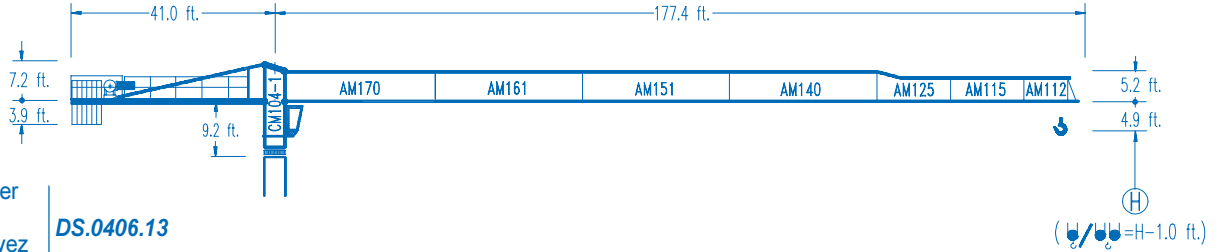
Opcional Optional En option Kaufoption	
-------------------------------------------------	--



COMANSA

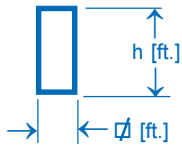
LC-5211

5.2 ft.



Configuraciones ver
Configuration see
Configurations voyez
Komponenten siehe

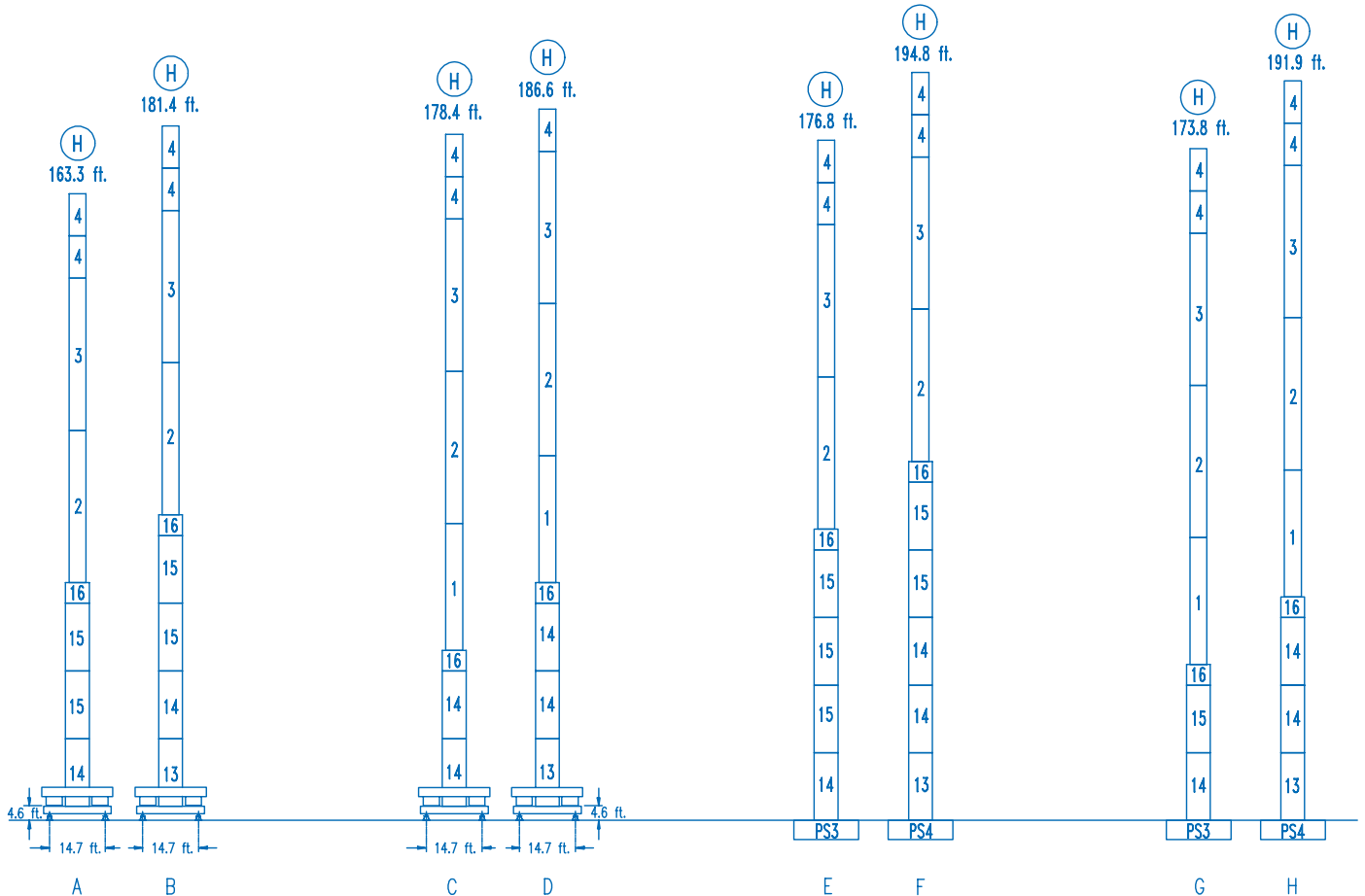
DS.0406.13



n°	Ref.	∅	h	n°	Ref.	∅	h	n°	Ref.	∅	h
1	MT123	3.9	33.1	10	S15	5.2	18.0	14	S13	5.2	18.0
2	MH124A	3.9	38.7	11	TS15	5.2	18.0	15	S12	5.2	18.0
3	MH124	3.9	38.7	12	S14	5.2	18.0	16	TMS13	5.2	3.3
4	MH121	3.9	9.8	13	TS14	5.2	18.0				

Grúa con cabina altura bajo gancho
Crane with cabin height under hook
Grue avec cabine hauteur sous crochet
Kran mit Kabine Hakenhöhe

H - 9.8 ft.

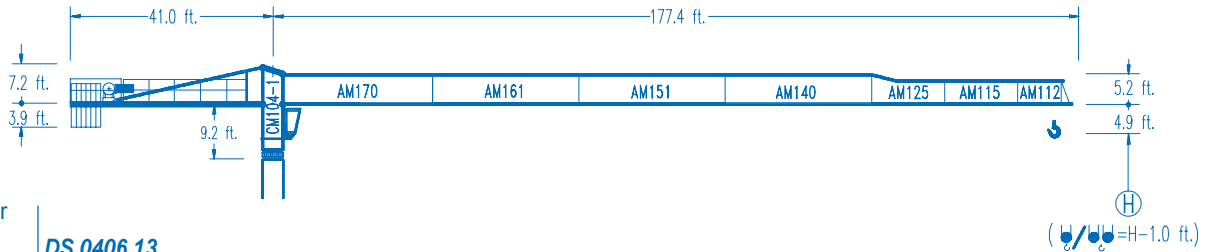




COMANSA

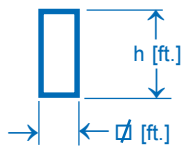
LC-5211

6.6 ft.



Configuraciones ver
Configuration see
Configurations voyez
Komponenten siehe

DS.0406.13



n°	Ref.	Ø	h	n°	Ref.	Ø	h	n°	Ref.	Ø	h
1	MT123	3.9	33.1	10	S25	6.6	18.0	14	S23	6.6	18.0
2	MH124A	3.9	38.7	11	TS25	6.6	18.0	15	S22	6.6	18.0
3	MH124	3.9	38.7	12	S24	6.6	18.0	16	TMS23	6.6	3.3
4	MH121	3.9	9.8	13	TS24	6.6	18.0				

Grúa con cabina altura bajo gancho
Crane with cabin height under hook
Grue avec cabine hauteur sous crochet
Kran mit Kabine Hakenhöhe

(H) - 9.8 ft.

