

TECH
SPEC

IC-200

maximcrane.com



AT A GLANCE:

- 30,000 lbs. max. capacity
- 45' 7" vertical reach
- 36' horizontal reach
- 15' boom reach
- Continuous rotation
- 17,000 lbs. deck capacity
- 4-wheel steer
- Hydraulic outriggers
- 7' 11" overall height
- Built tough to work tough in all industrial applications

MAXIM

Crane Works, L.P.

1-877-MAX-LIFT

bmc BRODERSON
Manufacturing Corp.

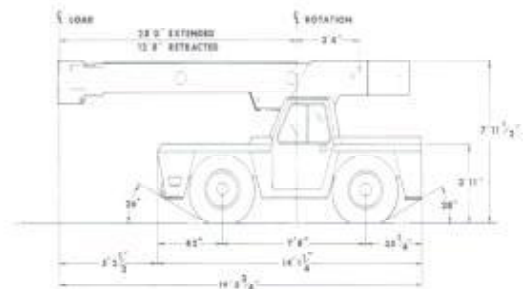
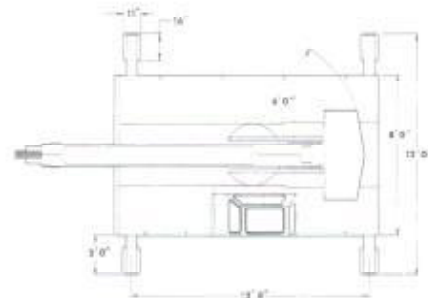
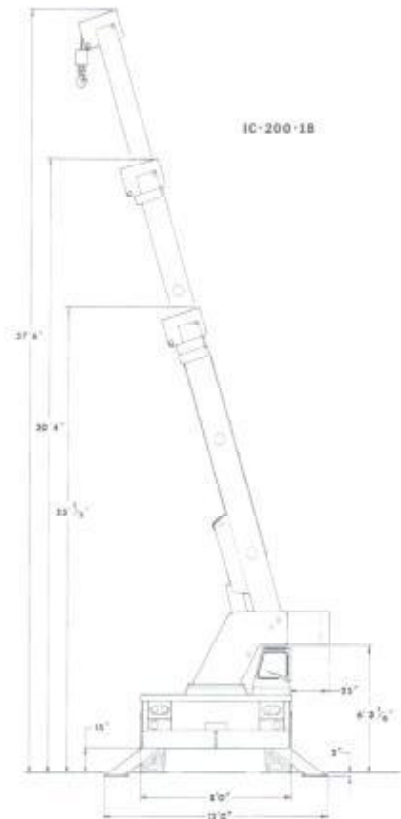
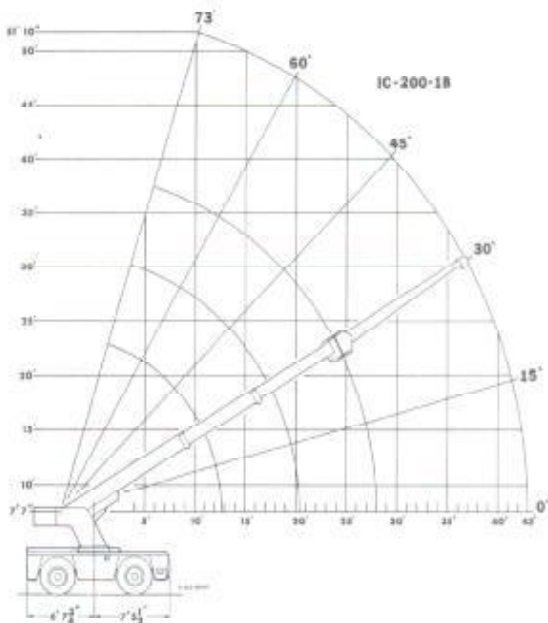
P.O. Box 14770, Lenexa, KS 66285-4770
(913) 888-0606 • FAX (913) 541-0690

IC-200

IC-200-1B

LOAD RADIUS FEET	BOOMS RETRACTED		BOOMS EXTENDED		15' BOOM EXTENSION INSTALLED	
	ON O.R.*	ON O.R.*	ON RUBBER	ON O.R.*	ON RUBBER	
6	30000	30000	16000	7500	7500	
8	25000	24000	13000	7500	7500	
10	20000	20000	11000	7100	7100	
12	16000	16000	9300	6150	6150	
14		11950	7000	5425	5425	
16		10500	5025	4850	4850	
19		8875	3825	4175	4175	
22		7600	2950	3675	3675	
25		6350	2450	3275	3275	
28		5300	2125	3000	2600	
31				3000	2075	
34				3000	1700	
38				3000	1300	
43				2900	975	

- Capacities on outriggers are 85% of tipping loads. Capacities on rubber 75% of tipping loads.
- Deduct 120 lbs. with Boom Extension in stowed position.



IC-200-2B

LOAD RADIUS FEET	BOOMS RETRACTED	BOOMS EXTENDED		15' BOOM EXTENSION INSTALLED	
	ON O/R*	ON O/R*	ON RUBBER	ON O/R*	ON RUBBER
6	30000	30000	16000	7500	7500
8	25000	23900	13000	7500	7500
10	19500	20000	11000	7100	7100
12	16000	16000	9300	6150	6150
14	13500	12500	6000	5425	5425
16		9500	5030	4850	4850
19		7900	3700	4175	4175
22		7050	3125	3675	3075
25		6100	2225	3275	3275
28		5100	1825	3000	2450
32		4080	1400	3000	1850
36		3315	1100	3000	1450
40				2800	1100
45				2500	775
51				2200	700

1. Capacities on outriggers are 85% of tipping loads. Capacities on rubber 75% of tipping loads.
2. Deduct 120 lbs. with Boom Extension in stowed position.

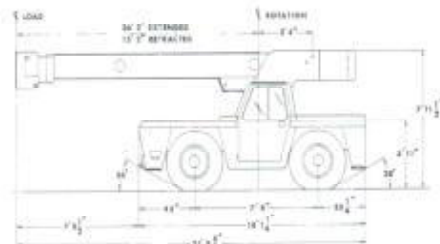
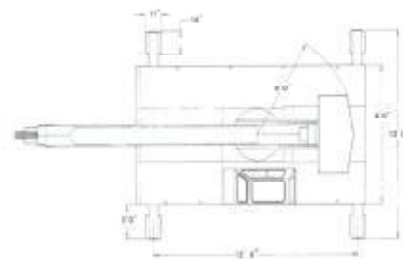
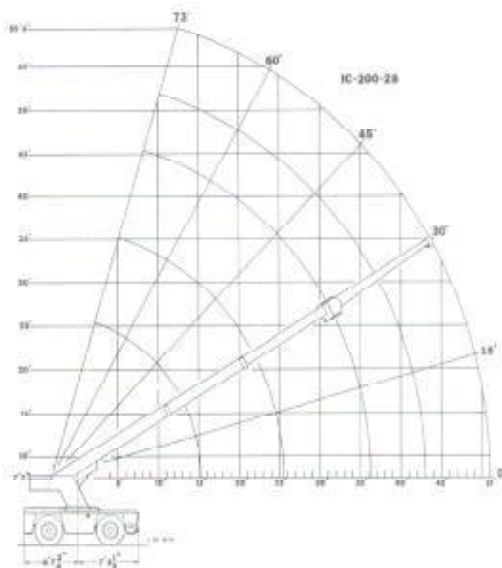
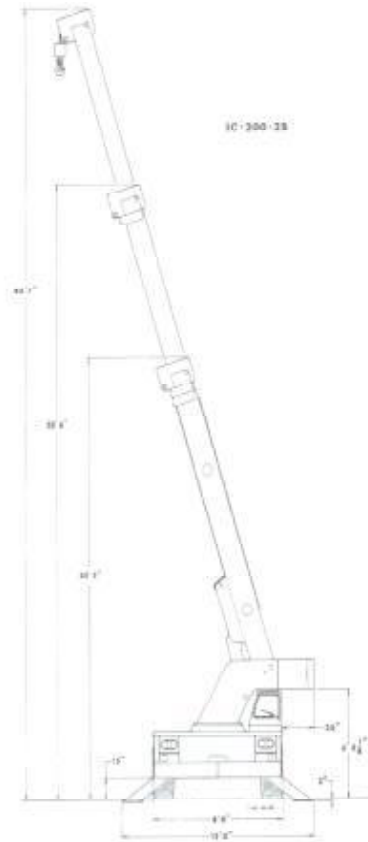
USE SINGLE PART LOAD LINE FOR LOADS TO 7500 LBS.



USE TWO PART LOAD LINE FOR LOADS TO 15000 LBS.



USE FOUR PART LOAD LINE FOR LOADS TO 30000 LBS.



General:

	IC-200-1B	IC-200-2B
Weight:	25,910 lbs.	26,250 lbs.
Road Speed	16 MPH	16 MPH
Turning Radius: (C/L of outer tire)	13'5"	13'5"
Aisle width for 90° turn	11'10"	11'10"
Boom Movement:		
Rotation	Continuous	Continuous
Elevation	0° to 73°	0° to 73°
Extension	12'8" to 28'	15'2" to 36'2"
Draw Pull	20,400*	20,400*
Gradeability	70%*	70%*

* Calculated—Wheels will spin before these values are reached.

Engine:

	Standard	Optional	Optional	Optional
Make	Ford	Perkins	Deere	Cummins
Model	CSG-649	4.236	4239	4B3.9
Type	Gas	Diesel	Diesel	Diesel
No. Cyl.	6	4	4	4
C.I.D.	300	236	239	239
HP @ Gov.	112	80	75	76
Speed				
Fuel Tank	30 gallon capacity			

Transmission:

4-Speed:		Reversing Gear Box
Make: Warner Gear		Make: Warner Gear
Model: T-18		Model: PR-1
Gear Ratios:		Torque Converter:
1st	6.324:1	Make: Borg & Beck
2nd	3.092:1	Model: "L"
3rd	1.686:1	Stall Ratio: 2.0:1
4th	1.0:1	

An oil cooler for torque converter and reversing gear box is standard equipment.

Axles:

Front Drive/Steer Axle:	Rear Steer only Axle:
Make: Clark	Make: Rockwell
Model: 12S0736	Model: FL-941
Gear Ratio: 19.54:1	Oscillation: 1 1/2° either direction

Brakes:

Service:
4-Wheel hydraulic drum with vacuum booster

Parking:
Band type mounted in drive line

Tires:

Standard: 15:00 x 22.5, 16-ply rating, highway type tread.

Chassis:

Cargo Deck:
71 sq. ft. of deck area
17,000 pounds capacity

Steps:
Located on front corners for easy access to deck area

Outriggers:
Four hydraulic outriggers of box beam construction, independent controls for left and right hand outriggers. Direct connected holding valves.
Outrigger pad dimension: 11" x 16"

Operators Compartment:

Control Station:
Provides one position access to all chassis and crane functions.

Electrical:

12 Volt D.C.
Lighting Group:
1 pair headlights with high and low beams for driving; integral tail, brake, turn signal and back-up lights in rear; front turn signals.

Instrument Group:
Fuel, ammeter, oil pressure, water temperature, converter oil temperature gauges and hourmeter.

Back-Up Alarm

Provides pulsating sound when transmission is in reverse.

Hydraulic System:

Tandem pump, directly-driven by engine crankshaft, rated at 22 and 34 G. P.M. 34 gallon reservoir standard.

Crane:

Boom Assembly:
Three section boom assembly equipped with bearing pads for efficient support, double-acting hydraulic cylinders equipped with direct-connected holding valve and boom angle indicator on each side of boom.

Boom Rotations:

Heavy-duty ball bearing rotation gear with external teeth support boom. Rotation is powered by a hydraulic motor and worm gear drive. Boom is attached by high strength weldment.

Boom Winch:

Turret-mounted, spur gear winch, is hydraulically powered to provide a bare drum line pull of 10,000 pounds at a speed of 110 feet per minute.
220 feet of 1/2 inch wire rope, downhaul weight and swivel hook are standard.

Boom Attachments:

Anti-Two-Block Device:
Prevents damage to hoist rope and/or machine components from accidentally pulling load hook against boom tip

4-Part-Line Sheave Block:

Single sheave block for four-part-line requirements.

Listed below are brief descriptions of each option available for the IC-200-B industrial crane.
Consult the IC-200-B Engineering Spec for additional information on each option.

1. IC-200-B Industrial Crane with 12'8"-20'0" Boom
2. IC-200-B Industrial Crane with 15'2"-36'2" Boom

ENGINE OPTIONS:

3. LP Gas Fuel System
Contains all necessary components for LP gas operations.
 4. Dual Fuel System
Contains all necessary components to burn LP gas and gasoline.
- Diesel Engines:**
5. Perkins
4-cylinder, Model D4 2.36
 6. John Deere
4-cylinder, Model 4239D
 7. Cummins
4-cylinder, Model 4B3.9
 8. Spark Arrester Muffler
Installed in addition to standard muffler.
 9. Engine Heater
Engine coolant heater installed to circulate warm water through engine, plugs into 120 volt AC.
 10. Ether Injection System
Ether starting aid controlled by switch in operator compartment and injects ether directly into intake manifold, Cummins Diesel only.
 11. Engine Shut Down Gauges
Shuts engine off when high water temperature or low engine oil pressure occurs.

TIRE OPTIONS:

12. Spare Tire & Wheel

CHASSIS OPTIONS:

13. Accessory Storage Box
Storage box is 14" deep x 10-1/2" long and 36 1/2" wide, located in front carry deck.
14. Auxiliary Winch
Mounted behind front bumper, hydraulically driven with control in operator's console.
15. Pintle Hook
Pintle hook mounted on rear frame, 5-ton capacity.
16. Headlight and Taillight Grilles
Welded steel protective grilles for headlight and taillights.

17. Rearview Mirrors
One mounted on right-hand deck stake and one mounted on left-hand deck stake.
18. Lifting Rings
Lifting rings at each corner of carry deck so sling can be attached for lifting crane.

OPERATOR COMPARTMENT OPTIONS:

19. Operator Guard
Tubular steel weldment with heavy expanded steel mesh top section.
20. All-Weather Cab
Rigid-mounted canopy section and removable hinged door. Includes heater, electric windshield wiper, one sliding glass window in the door and one fold-out window in rear to provide flow-through ventilation. Defroster fan included.
21. Sliding Right-Hand Window
Window on right-hand side of cab slides open for additional ventilation.
22. Windshield Washer
Includes reservoir pump and nozzle.
23. Floor Mat
Vinyl mat with foam backing.
24. Operator Suspension Seat
Provides additional operator comfort.
25. Noise Reduction Kit
Includes floor mat, control valve and side panels of foam backed vinyl for noise reduction.

ELECTRICAL OPTIONS:

26. Outrigger Warning System
Two-tone alarm is activated when "outrigger down" controls are operated.
27. Strobe Lights
Yellow strobe light mounted on each side of turret weight box.
28. Lighted Instrument Gauges
Instrument gauges equipped with lights for night operations.
29. Amber Rotating Beacons
Amber rotating beacon mounted on each side of turret weight box.
30. Boom Work Lights
One work light mounted to boom to light boom tip and one work light mounted to turret to light ground under boom tip.

31. Boom Work Lights and Beacons
Boom work lights and amber rotating beacons installed.
32. Boom Work Lights and Strobe
Boom work lights and strobe lights installed.
33. Dome Light
Interior light installed for units equipped with an all weather cab.

HYDRAULIC OPTIONS:

34. Boom Structural Protection System
Important to understand fully the description of the Boom Structural Protection System described in the IC-200 Engineering Spec. This option is not intended to and will not replace an LMI.

BOOM ATTACHMENTS:

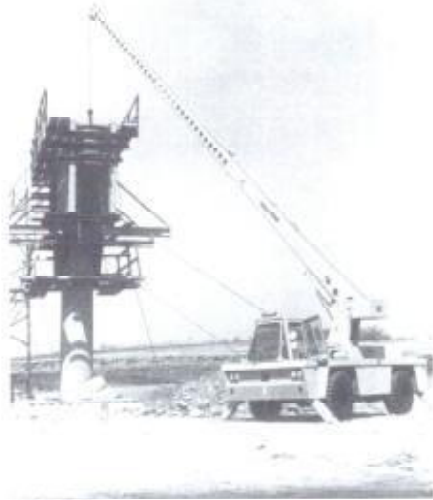
35. Boom Extension, 15 Foot
Boom Stowable.
36. Boom Extension, 15 Foot, Offsettable
boom extension is offsettable to 3 different positions; 0 degree (inline), 15 degree and 30 degree offset.
37. Sheave Block-2-part
38. Searcher Hook - Large
Swivel hook with spring latch hangs from support structure projecting outward from boom tip, 5,000 pound capacity.
39. Searcher Hook - "H" Shape
Swivel hook with spring latch hangs from link under boom tip, 5,000 pound capacity.
40. Load Moment Indicator - Krueger
Warns operator of impending overload with audible and visual signals. Prevents overload by stopping boom functions that cause overloads. Readouts for load, boom angle, boom length, and load radius.
41. Load Indicator - Krueger
Includes 3-sheave load sensor on top of boom and readout box on top of instrument panel.
42. Load Moment Indicator - PAT
Same as item 51, except manufactured by PAT.
43. Load Indicator - PAT
Same as item 52, except manufactured by PAT.



IC-200

MAXIM
Crane Works, L.R.
1-877-MAX-LIFT

maximcrane.com



BMC BRODERSON
Manufacturing Corp.

P.O. Box 14770, Lenexa, KS 66285-4770
(913) 688-0600 • FAX (913) 541-0600