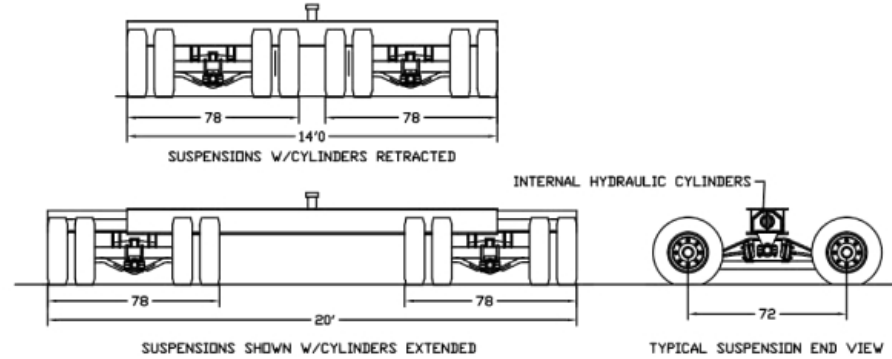
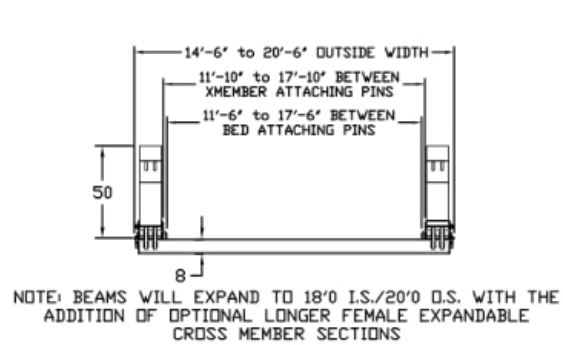


High Capacity Dual-Lane Transport





Shown on the previous page hauling a 360,000-pound transformer, our innovative high-capacity dual-lane transport trailer offers suspension beam, perimeter deck, dollies, or bolster options.

The 225-foot-long trailer also features telescoping axles that extend from 14 to 20 feet to accommodate over-dimensional loads and more evenly distribute load weight over bridges or culverts.

Configurations

